

FOR IMMEDIATE RELEASE

CONTACT:

Jamie Juliano, Marketing Director

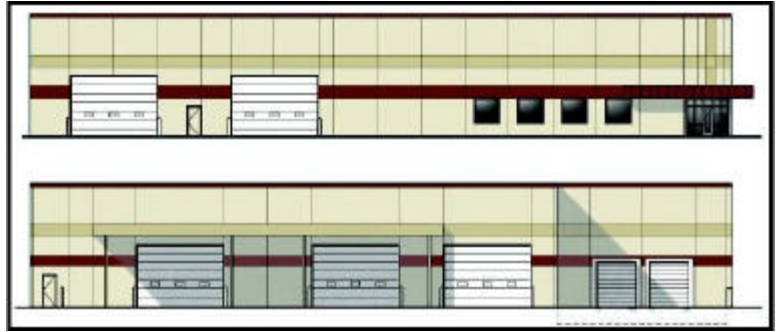
Meridian Design Build LLC

847-374-9200

847-374-9222 (fax)

jjuliano@meridiandb.com

www.meridiandb.com



Meridian Design Build Selected for Chicago Build-To-Suit

Meridian Design Build has been selected by Gypsum Supply Company to act as design-build general contractor for a new 37,942 square foot facility to be constructed in Chicago's Stockyards Industrial Park. Gypsum Supply Company is a premier material supplier in the drywall, plaster, insulation, acoustical tile and grid, steel framing and accessories, EIFS and exterior systems markets.

Scheduled for completion in the 2nd quarter of 2009, the building will contain warehouse and distribution space, 3,000 square foot of office/employee support areas, and a product showroom.

A number of sustainable design features will be incorporated into the building including a white reflective TPO roofing system, concrete pavement, and bio-swales. In addition, approximately 2,500 tons of concrete and masonry materials will be recycled onsite to minimize the amount of imported virgin aggregate material needed for the project.

The design team includes Cornerstone Architects Ltd. and SpaceCo Inc. (Civil Engineer). Adam Goldberg, Project Engineer, and John Helgesen, General Superintendent, are handling the project for Meridian Design Build. Jeff Galante of Lee and Associates represented Gypsum Supply Company in the acquisition of the site.

Meridian Design Build offers full-service design/build and general contracting services to the industrial, office and commercial markets. More information on Meridian Design Build can be found at www.meridiandb.com.