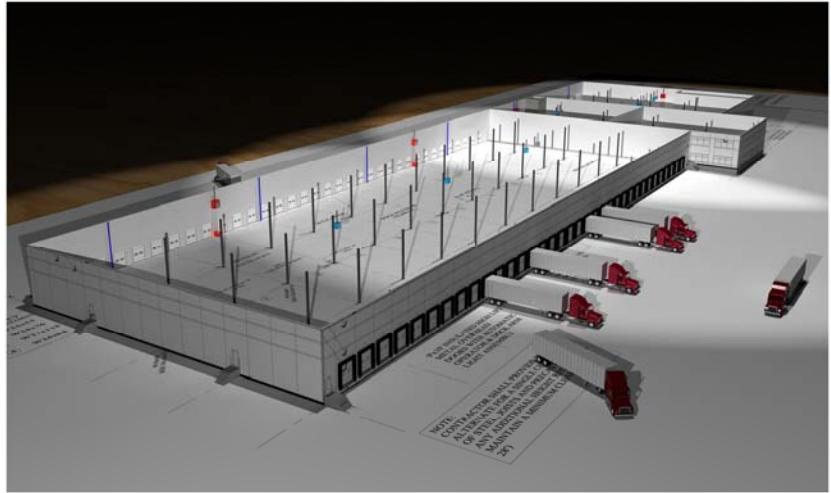




FOR IMMEDIATE RELEASE
March 25, 2012

CONTACT:

Howard Green
Meridian Design Build
847-374-9200
847-374-9222 (fax)
www.meridiandb.com



Meridian Design Build Begins work on 38 acre Redevelopment Project

Meridian Design Build has been selected to act as general contractor for a 38 acre redevelopment project for Polmax Transportation at 122nd and Central in Alsip, IL. Demolition work is currently underway at the site, previously home to an auto auction mall.

The project includes construction of a new 150,585SF cross dock facility that will include full service truck maintenance and repair bays, a truck wash, and approximately 20,000SF of corporate office space. Site improvements will include accommodations for the secured parking of approximately 500 trailers. Existing pavement is being left in place where possible and topped with Roller Compacted Concrete to accommodate the new use.

Joe Grimes, Vice President of Meridian Design Build, is coordinating the project for Meridian. Architectural and structural design services are being provided by arete'-Knight, Civil Engineering work is being completed by Hoefflerle-Butler. HVAC, Electrical, Plumbing, and Fire Protection systems are being completed on a design/build basis.

"We're pleased to have been selected by Polmax Transportation to work with them on this project" said Howard Green, Executive Vice President of Meridian Design Build "this is an exciting project and we're looking forward to helping Polmax make their move to Alsip a successful one."

Jim Conrad and Chuck Wiercinski, CCIM, of McLennan Companies represented Polmax Transportation in the selection and purchase of the property. Larry Johnson of CBRE represented the seller.

Meridian Design Build, a Member of the U.S. Green Building Council, offers full-service general contracting and design/build services to the industrial, office, healthcare, retail, hospitality, and commercial markets. More information on Meridian Design Build can be found at www.meridiandb.com.