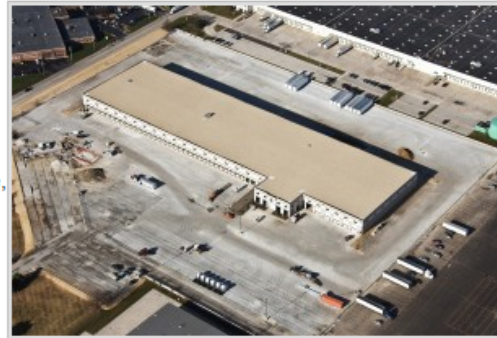


Meridian completes Alsip build-to-suit

April 01, 2013 | Staff Writer

Meridian Design Build recently completed construction for a 171,670-square-foot build-to-suit for Polmax Transportation at 122nd and Central in Alsip. The project included the adaptive re-use and redevelopment of a 38-acre site previously utilized as an Auto Auction into a modern cross-dock warehouse, vehicle repair facility and corporate headquarters for the locally owned company.



The scope of the project included demolition of an existing 37,000-square-foot building and onsite crushing/recycling of more than 14,000 tons of asphalt and concrete. Existing light duty pavement was left in place to the extent possible and topped with Roller Compacted Concrete to accommodate the new use. The completed facility includes a full-service truck maintenance shop, a truck wash, 500 leased trailer positions and a diesel fueling island designed to allow the growing company to provide comprehensive services to its third party clients.

Joe Grimes, vice president, managed the project for Meridian and Bob Malachowski, superintendent, coordinated work at the job site. Architectural and structural design services were provided by Knight Engineers & Architects and civil engineering work was completed by Hoeffler-Butler.

Chuck Wiercinski, CCIM and Jim Conrad of McLennan Companies represented Polmax Transportation in the purchase of the property. Larry Johnson of CBRE represented the seller in the transaction.